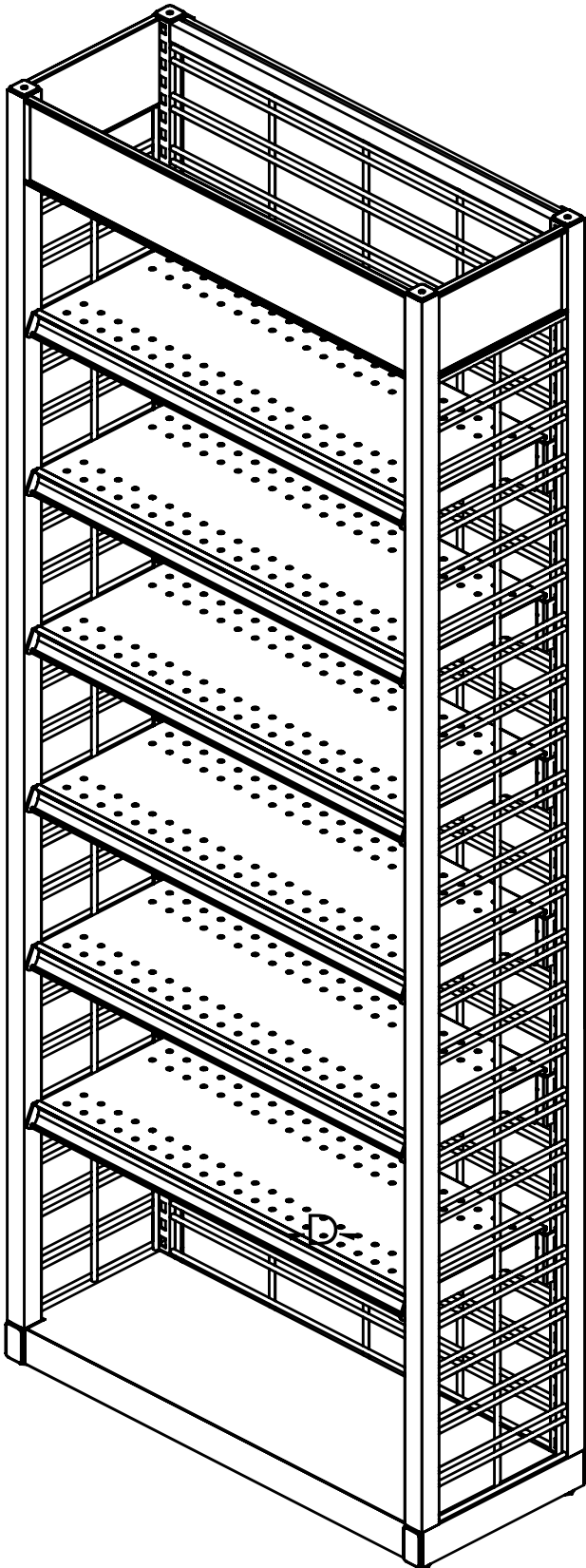


MERCHANDISER END WING

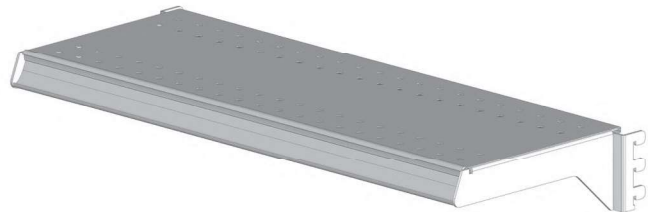


MERCHANDISING END WING

At the end of the shelving run, this End Wing is attached to display spot merchandising in a neat, stable way. The Wire Grid End Wing shelf is particularly designed to fit into the End Wing Display.

Upper Shelves are exclusive to the end wings and must be ordered separately.

Item#	MEW	Width	Height	Depth
Prefix		Width	Height	Depth
MEW		18"	60"	8"
		24"	72"	12"
		36"	78"	



END WING UPPER SHELVES

Item#	MEWS	Width	Depth
Prefix		Width	Depth
MEWS		18"	8"
		24"	12"
		36"	