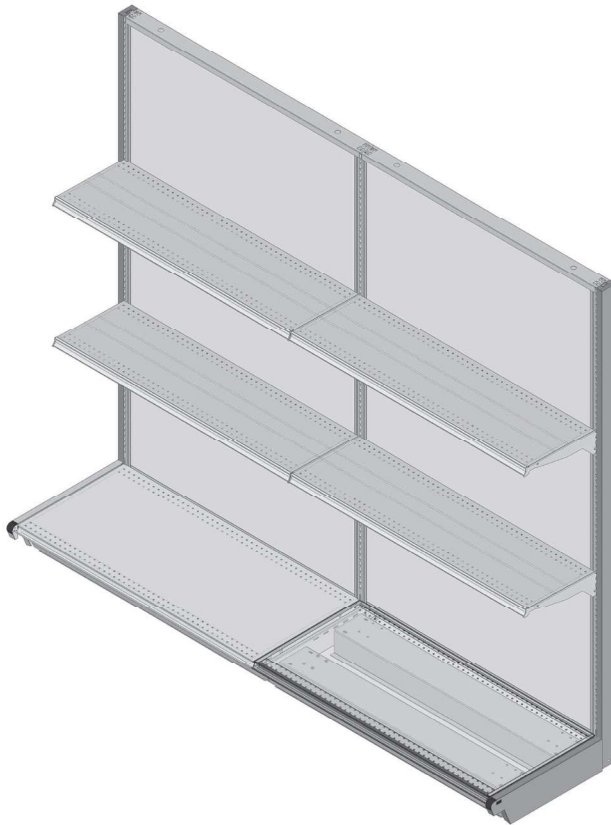
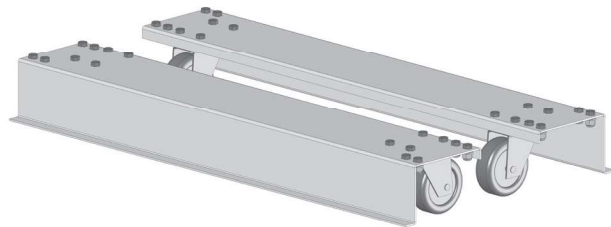
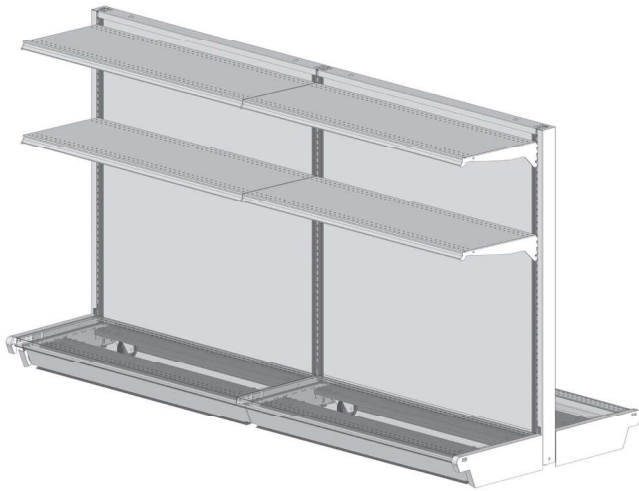


# MOBILE SHELVING



## MOBILE SHELVING CARRIERS

A unique approach to changing merchandising needs that is made possible by the Storflex unitized welded upright and base shoe system.

At Storflex, we weld angles to our uprights to allow the use of carrier rails that are shipped complete with heavy duty 3 1/2", full swivel, ball bearing hard rubber casters; Four nuts and bolts are all that is required to convert to Mobile Shelving.

Type	Size	Item #	Wt.
Gondola	36"	MSCR36G	26
	48"	MSCR48G	26
Wall	36"	MSCR36W	13
	48"	MSCR48W	13

### Note:

- Gondola units may not extend beyond three 4-foot sections (12').
- Upper shelves should be at least 5" smaller than the base on Wall sections.
- Each Gondola /Wall Section requires (2) Mobile shelf Carriers
- Please see your salesman for limitations.