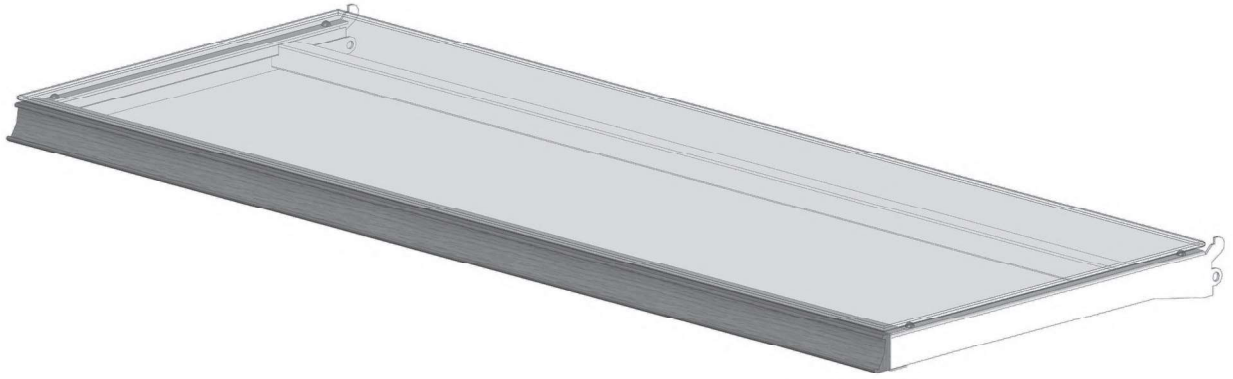


# GLASS SHELVES / LED STICK LIGHTING APPLICATION



## GLASS SHELVES/LED LIGHTING

The Glass Shelf accommodates a magnetic LED Stick Light (purchased separately). The seamless welded frame includes a 1-1/4" price tag molding. Glass is shipped separately to be installed in the frame. This shelf is great for showcasing high end merchandising. In addition, a great compliment when used within our security door kit systems.

Depth	Width	Item #	Wt. Lbs.
12"	3'	GSTM 312 TG	15.7
	4'	GSTM 412 TG	17.6
14"	3'	GSTM 314 TG	17.1
	4'	GSTM 414 TG	20.0
16"	3'	GSTM 316 TG	18.5
	4'	GSTM 416 TG	22.4
18"	3'	GSTM 318 TG	19.9
	4'	GSTM 418 TG	24.8
20"	3'	GSTM 320 TG	21.3
	4'	GSTM 420 TG	27.3
22"	3'	GSTM 322 TG	22.7
	4'	GSTM 422 TG	29.7
24"	3'	GSTM 324 TG	24.1
	4'	GSTM 424 TG	32.1

## POWER SUPPLY

(7) Shelves Max Per Unit

Item #	PB52503LED100QC
--------	-----------------

## LED STICK LIGHT 22" WIRE

Available in Black or White

Item#	P	B	4	0	0	P			Q	C	N	2	2
	Depth												

## POWER STRIP

(1) Per Power Supply. Available in Black, White, or Beige

Item #	PB52503TRKXX96
--------	----------------

Lighting Accessories Ordered Separately



www.storflex.com • Telephone (607) 962-7655  
392 West Pulteney Street, Corning, New York 14830